

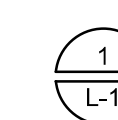
TREE REMOVAL FORM

TREE NUMBER	TREE TYPE	CALIPER INCHES MULTI-TRUNK SHOWN WITH COMMA	NOTE/ REPLACEMENT TREE QUANTITY
101	ASH	11,12	1:1
102	NON	12,13	DEAD
105	LAUREL	8,5,5,4	NOT A TREE
107	MAPLE	15,11	1:1
109	MAPLE	5,5,3	1:1
122	CEDAR	5	0
124	HEMLOCK	8	1:1
129	POPLAR	33	1:1
130	YELLOW WOOD	16	1:1
139	APPLE	3,4,4	0
140	APPLE	3,3,4,5,5,5,4	0
141	APPLE	14	0
142	DECID	14	1:1
143	CEDAR	5	0
144	CEDAR	11	1:1
152	SPRUCE	7	1:1
156	FIR	26	1:1
160	FIR	22	1:1
162	FIR	35	1:1
163	FIR	36	1:1
164	FIR	28	1:1

TOTAL NUMBER OF TREES TO BE REPLACED: 14

REPLACEMENT TREE PLANTINGS

QUAN.	SYMBOL	PLANT NAME	SIZE/SPACING
8	ACERC	ACER GIRCINATUM/ VINE MAPLE	6' MULTI-TRUNKED @ Nursery Trees.com
8	CORNV	CORNUS NUTALLII VENUS	1.5" CALIPER Snohomish
17	PSE	PSEUDOTSUGA MENZEISII/ DOUGLAS FIR	5-6' B/B
22	THUJ	THUJA PLICATA/ WESTERN RED CEDAR	1-2' B/B
3	TSUGA	TSUGA HETEROPHYLLA/ LOWLAND HEMLOCK	4-5' B/B



TREE REMOVAL PLAN

SCALE: 1" = 10'-0"

KEN LARGE
Landscape Architect
21803 NE 17th Court
Snohomish, Wa. 98074
Office: 425-836-4578, Cell: 206-396-7617
E-mail: kila@comcast.net
FAX: 425-898-8923

SEAL:



OGDEN POINT
3675 W. MERCER WAY
MERCER ISLAND, WASHINGTON

JOB NUMBER: _____
DRAWN: _____ **KEL**
CHECKED: _____
DATE: APRIL 12, 2017

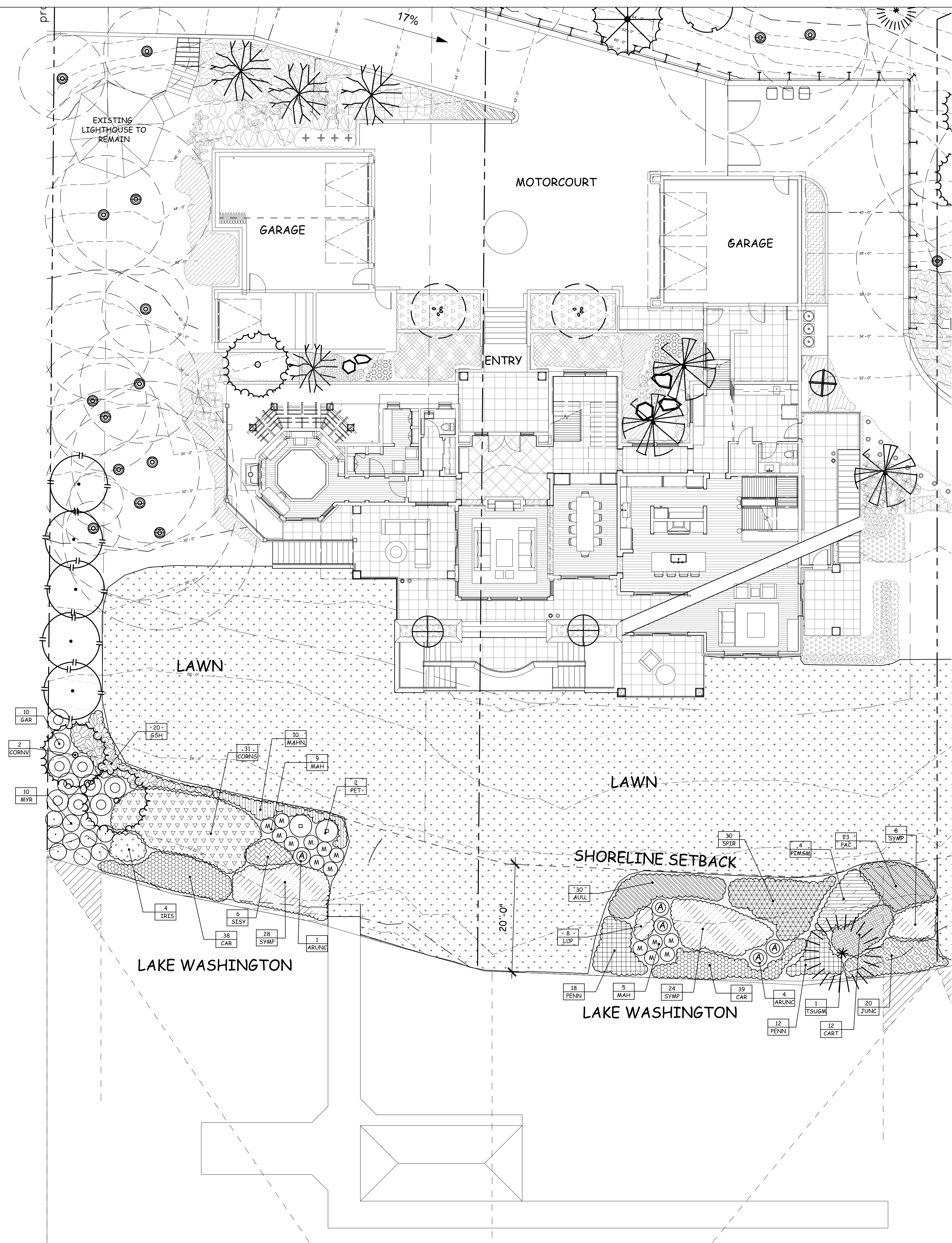
REVISIONS:

1	

SHEET TITLE:
**TREE
REMOVAL
AND
REPLACEMENT
PLAN**
PERMIT SET

SHEET NUMBER:

L-1



SHORELINE PLANT LIST

April 10, 2017 *INDICATES NATIVE PLANT

QUAN	SYMBOL	PLANT NAME	SIZE SPACING COMMENT
5	ARNUC*	ARUNCUS DIOICUS/ GOATSBEARD	1 GALLON CAN 18" TRI SP
30	AUU*	ARCTOSTAPHYLOS UVA URSI	1 GALLON CAN 24" TRI SP
77	CAR*	CAREX OBNUPTA/ SLOUGH SEDGE	4" POTS 24" TRI SP
12	CART	CEANOTHUS PROSTRATUS/ MAHALA MAT	ONE GALLON, 18" tri spacing
31	CORNS*	CORNUS SERICEA KELSEY/ DWARF RED OSIER DOGWOOD	2 GALLON CAN
2	CORNV*	CORNUS NUTTALLII VENUS	1.5" CALIPER
10	GAR*	GARRYA ELLIPTICA ISSAQUAHENSIS	1 GALLON CAN
20	GSH*	GAULTHERIA SHALLON SALAL	4" POTS, 18" TRI SP
4	IRIS*	IRIS DOUGLASIANA	1 GALLON CAN
20	JUNC*	JUNCUS EFFUSES QUARTZ CREEK	QUART
8	LUP*	LUPINUS HYBRID	1 GALLON CAN
14	MAH*	MAHONIA AQUIFOLIUM CHARITY/ CHARITY OREGON GRAPE	5 GAL. CAN, 18" HEIGHT, 3' TRI. SPACING
10	MAHN*	MAHONIA NERVOSA/ LONGLEAF OREGON GRAPE	1 GALLON CAN, 24" tri sp.
10	MYR*	MYRICA GALE/SWEET GALE	1 GALLON CAN 24" TRI SP
23	PAC*	PACHISTIMA MYRSINITES/ OREGON BOXWOOD	1 GALLON CAN 24" TRI SP
30	PENN*	PENSTOMEN SERRULATUS / CASCADE PENSTEMON	1 GALLON CAN
2	PET*	PETASITES PALMATUS/ COLTSFOOT	1 GALLON CAN
4	PINSM	PINUS MUGO SLOWMOUND	5 GALLON CAN
6	SISO*	SISYRINCHIUM IDAHOENSE/ WESTERN BLUE EYE GRASS	1 GALLON
30	SPIR*	SPIRAEA SPLENDENS	1 GALLON CAN
60	SYMP*	SYMPHIOCARPUS ALBUS SNOWBERRY	1 GAL. CAN, 18" HEIGHT 30" TRI SP
1	TSUGM*	TSUGA MERTENSIANA/ MOUNTAIN HEMLOCK	5-6" B/B

1 SHORELINE PLANTING
L-2 SCALE: 1" = 10'-0"

KEN LARGE
Landscape Architect
21803 NE 17th Court
Sammamish, Wa. 98074
Office: 425-836-4578, Cell: 206-396-7617
E-mail: kila@comcast.net
FAX: 425-898-8923

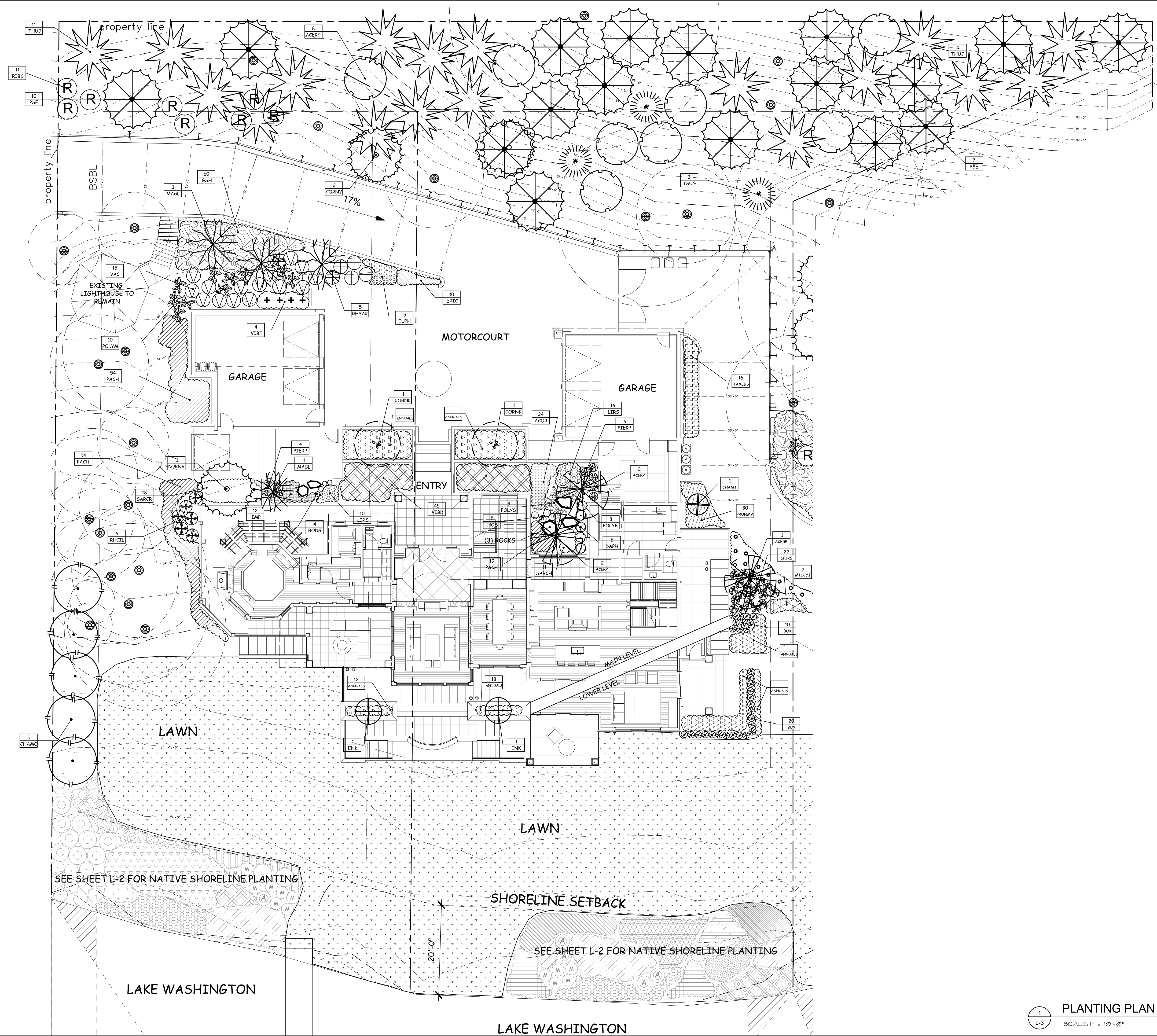


OGDEN POINT
3675 W. MERCER WAY
MERCER ISLAND, WASHINGTON

JOB NUMBER: _____
DRAWN: _____
CHECKED: _____
DATE: APRIL 12, 2017
REVISIONS:
1

SHEET TITLE:
SHORELINE PLANTING PLAN
PERMIT SET
SHEET NUMBER:

L-2



KEN LARGE
 Landscape Architect
 21803 NE 17th Court
 Sammamish, Wa. 98074
 Office: 425-836-4578, Cell: 206-396-7617
 E-mail: klla@comcast.net
 FAX: 425-898-8923



OGDEN POINT
3675 W. MERCER WAY
MERCER ISLAND, WASHINGTON

JOB NUMBER: _____
 DRAWN: _____ KEL
 CHECKED: _____
 DATE: APRIL 12, 2017
 REVISIONS:

1	

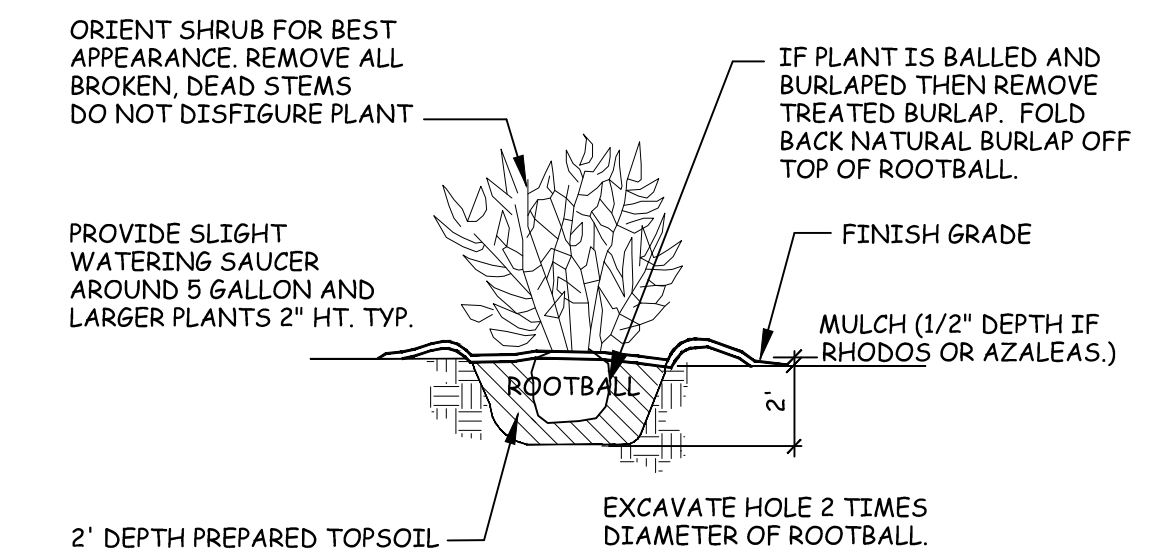
SHEET TITLE:
 PLANTING PLAN
 PERMIT SET
 SHEET NUMBER:
L-3

1
 L-3
 PLANTING PLAN
 SCALE: 1" = 10'-0"

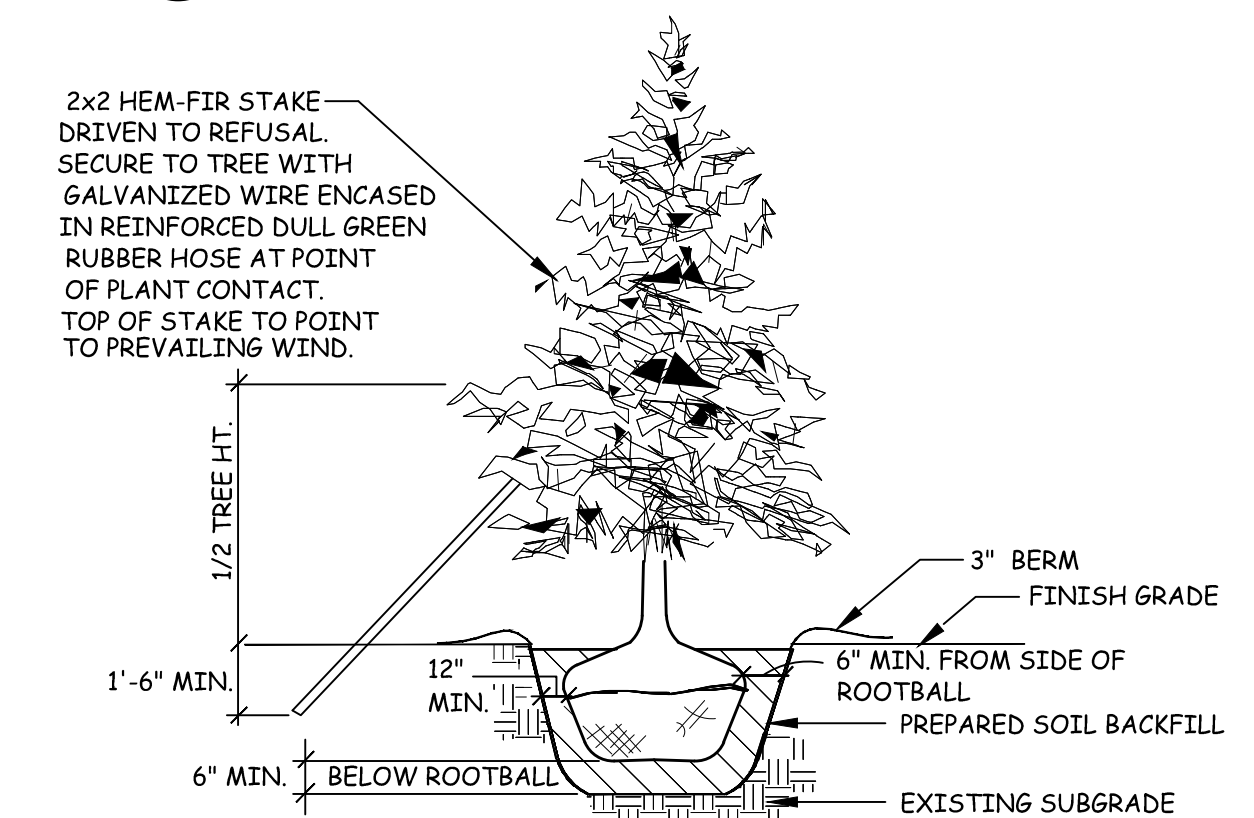
PLANT LIST

QUAN.	SYMBOL	PLANT NAME	SIZE SPACING
5	ACERP	ACER PALMATUM SHISHIGASHIRIA LIONSHEAD MAPLE	SPECIMENS TO BE SELECTED
8	ACERC	ACER CIRCINATUM/ VINE MAPLE	6' MULTI-TRUNKED @
11	ACOR	ACORUS PUSILLUS MINIMUS AUREUS	1 GALLON CAN
24	ACOR	ACORUS GRAMINEUS OGN/ GOLDEN VARIEGATED SWEET FLAG	1 GALLON CAN
30	BUX	BUXUS SEMPERVIRENS/ BOXWOOD	15-18" B/B
52	CALW	CALLUNA V. CON BRIO	1 GALLON CAN
5	CHAMO	CHAMAECYPARIS OBTUSA/ HINOKI CYPRESS	8" B/B FULL ROUNDED
1	CHAMT	CHAMAECYPARIS TEMPLEHOF	3 X 3'- B/B
9	CIST	CISTUS PURPUREAS ROCKROSE	2 GALLON CAN
2	CORNK	CORNUS KOUSA CHINENSIS CHINESE DOGWOOD	1.5" CALIPER MULTI-TRUNK
8	CORNV	CORNUS NUTALLII VENUS	1.5" CALIPER
7	CORNWMF	CORNUS MID WINTER FIRE	5 GALLON CAN
4	CROC	CROCOSMIA LUCIFER	1 GALLON CAN
5	DAHPPH	DAPHNE TRANSATLANTICA ETERNAL FRAGRANCE	5 GALLON
2	ENK	ENKIANTHUS CAMPANULATUS	6-7" B/B
12	ERIC	ERICA CIN. LIME SODA	1 GAL. CAN AT 24" TRI. SPACE
21	ERICP	ERICA KRAMMERS ROTE	1 GALLON CAN
10	ERICW	ERICA WINTERFREUNDE	1 GALLON
5	EUPH	EUPHORBIA WULFENII	1 GALLON CAN 24" TRI SP
156	GSH	GAULTHERIA SHALLON SALAL	4" POTS, 18" TRI SP
5	HOS	HOSTA FORTUNII ELEGANS	1 GALLON CAN
3	HYDP	HYDRANGEA LIMELIGHT	5 GALLON CAN
12	IMP	IMPERATA CYLINDRICA RUBRA JAPANESE FOREST GRASS	1 GALLON CAN
11	LAVD	LAVENDULA DENDATA	1 GALLON
26	LIRS	LIROPE SPICATA/ SPREADING LIROPE	QUARTS AT 24" TRI SPACING
1	MAG	MAGNOLIA KOBUS KOBUSHI MAGNOLIA	2" CAL. MULTI-TRUNKED SPECIMEN
3	MAG	MAGNOLIA LOEBNERI MERRILL	SPECIMEN MULTI-TRUNK B/B

11	MISCYJ	MISCANTHUS YAKU JIMA	1 GALLON
9	NEPT	NEPTETA CATARIA WALKERS LOW CATNIP	1 GALLON CAN
127	PACH	PACHYSANDRA TERMINALIS GROUND SPURGE	4" POTS 18" TRI SP
10	PIERP	PIERUS PRELUDE	1 GALLON CAN
8	POLYB	POLYSTICHUM POLYBLEHARUM TASSEL FERN	1 GALLON CAN
34	POLYM	POLYSTICHUM MUNITUM SWORD FERN	1 GALLON CAN
3	POLYS	POLYSTICHUM SETIFERUM PLUMOSO DIVISOLOBUM	1 GALLON CAN
98	PRUNMV	PRUNUS L. MT. VERNON	1 GALLON CAN 24" TRI SPACE
17	PSE	PSEUDOTSUGA MENZEISII/ DOUGLAS FIR	5-6" B/B
18	RAPH	RAPHIOLEPIS UMBELLATA MINOR	2 GALLON CAN
6	RHCIL	RHODODENDRON CILPINENSE	12-15" B/B
5	RHYAK	RHODODENDRON YAKUSHIMANUM	18-21" B/B WHITE COLOR
11	RIBS	RIBES SANGUINEUM	5 GALLON CAN
21	ROSM	ROSEMARY OFFICINALIS ROSEMARY	2 GAL. CAN 18" HT @ 18" TRI SP.
4	RODG	RODGERSIA AESCULIFOLIA	1 GALLON CAN
11	SARCH	SARCOCOCCA HUMILIS	1 GALLON CAN
18	SARCR	SARCOCOCCA RUSKIFOLIA FRAGRANT SARCOCOCCA	1 GALLON
30	SPIRG	SPIRAEA LIMEMOUND	2 GALLON CAN
12	SPIRV	SPIRAEA VAN HOUTEII	2 GALLON CAN
1	STEW	STEWARTIA PSEUDOCAMELIA/ JAPANESE STEWARTIA	1.5" CALIPER B/B
42	TAXH	TAXUS HICKSII	8" B/B
16	TAXLGS	TAXUS LOW GREEN SPREADER	1 GALLON CAN
22	THUJ	THUJA PLICATA/ WESTERN RED CEDAR	1-2" B/B
3	TSUG	TSUGA HETEROPHYLLA/ LOWLAND HEMLOCK	4-5" B/B
15	VAC	VACCINIUM OVATUM/ EVERGREEN HUCKLEBERRY	1 GALLON CAN 24" TRI SPACE
45	VIBD	VIBURNUM DAVIDII	1 GALLON CAN
4	VIBT	VIBURNUM TINUS	5 GALLON CAN
7	YUC	YUCCA COLOR GUARD	2 GALLON



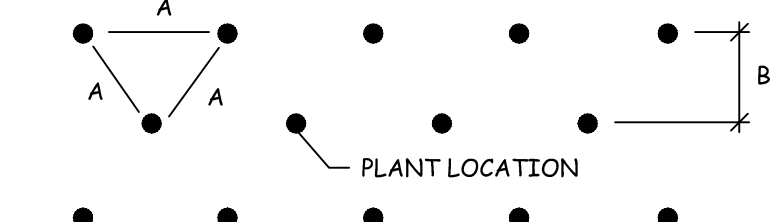
1
L-4
TYPICAL SHRUB PLANTING
SCALE: N.T.S.



2
L-4
TYP. CONIFEROUS TREE PLANTING
SCALE: N.T.S.

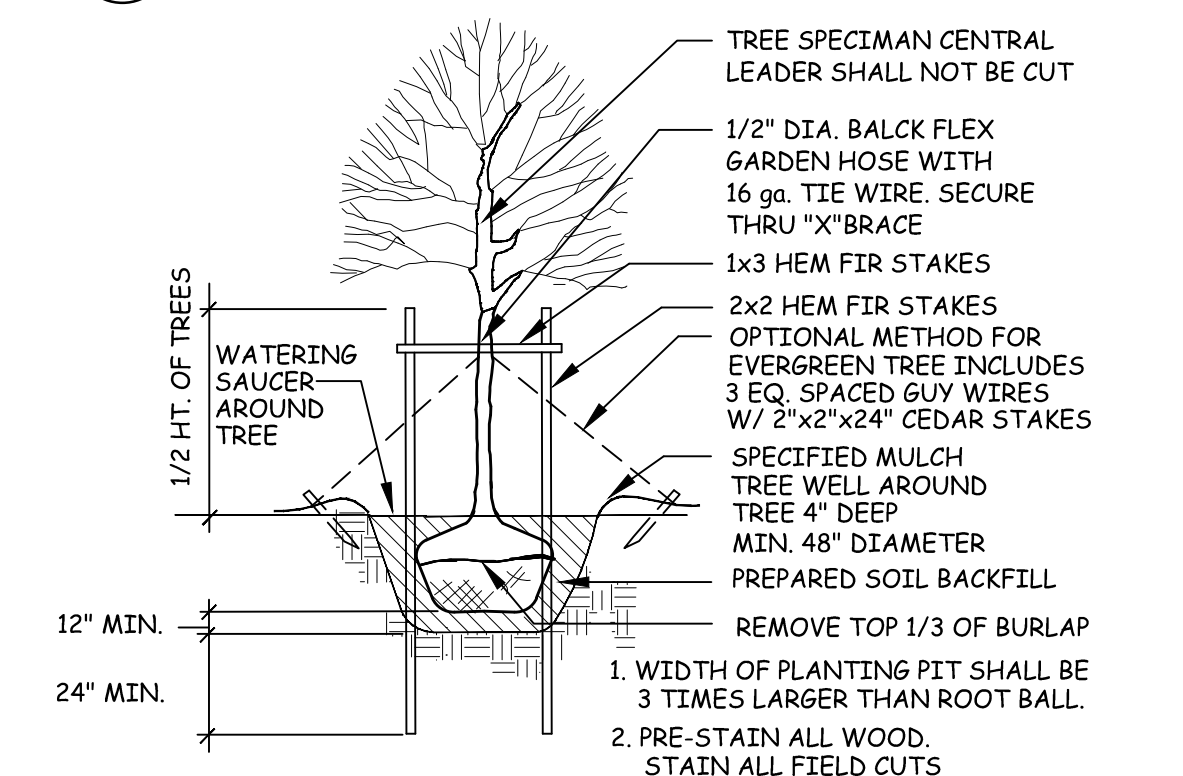
SPACING "A"	SPACING "B"	# OF PLANTS/SF
6" o.c.	5.20'	4.60
8" o.c.	6.93'	2.60
10" o.c.	8.66'	1.66
12" o.c.	10.40'	1.15
15" o.c.	13.00'	.738
18" o.c.	15.60'	.512
24" o.c.	20.80'	.290
30" o.c.	26.00'	.185
36" o.c.	30.00'	.116

SEE GROUND COVER PLANT KEY FOR MAXIMUM TRIANGULAR SPACING "A". THIS CHART IS TO BE USED TO DETERMINE NUMBER OF GROUND COVER PLANTS REQUIRED IN A GIVEN AREA.



PLANT SPACING CHART FOR USE WHEN PLANTS ARE SPACED EQUIDISTANT FROM EACH OTHER, AS IN ALL MASSED SHRUB/GROUND COVER PLANTINGS

3
L-4
PLANT SPACING CHART
SCALE: N.T.S.



4
L-4
TYPICAL DECIDUOUS TREE PLANTING
SCALE: N.T.S.

SEAL:



OGDEN POINT
3675 W. MERCER WAY
MERCER ISLAND, WASHINGTON

JOB NUMBER: _____
 DRAWN: _____ KEL
 CHECKED: _____
 DATE: APRIL 12, 2017
 REVISIONS:
 1 _____

SHEET TITLE:

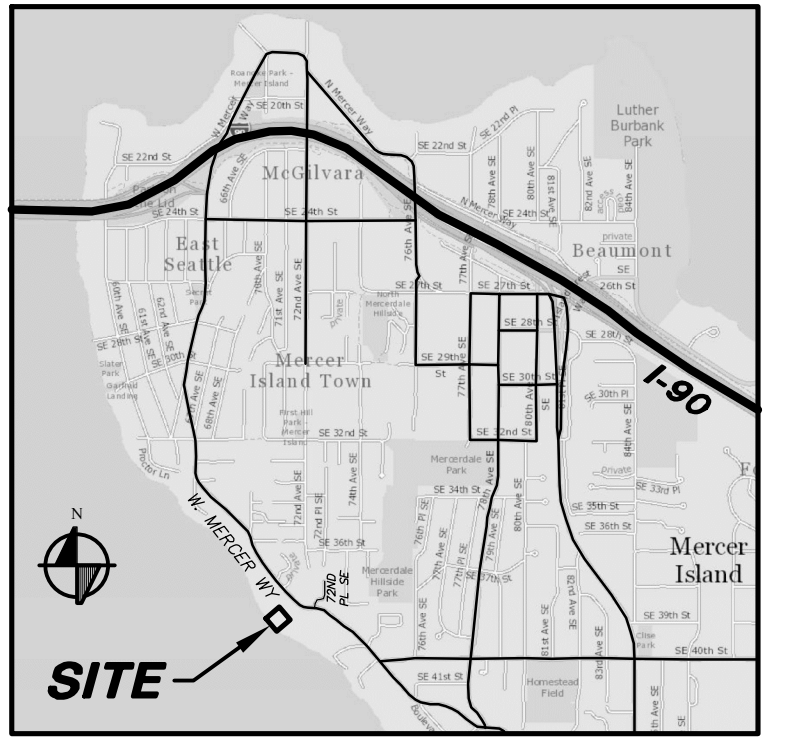
**PLANT LIST
AND
PLANTING
DETAILS**
 PERMIT SET

SHEET NUMBER:

L-4

KEN LARGE
 Landscape Architect
 21803 NE 17th Court
 Sammamish, Wa. 98074
 Office: 425-836-4578, Cell: 206-396-7617
 E-mail: kila@comcast.net
 FAX: 425-898-8923

POR. OF GOV. LOT 2, SW 1/4, SW 1/4, SEC. 12, TWP. 24N, RGE 4E, W.M.



VICINITY MAP
NOT TO SCALE

FF ELEVATIONS:

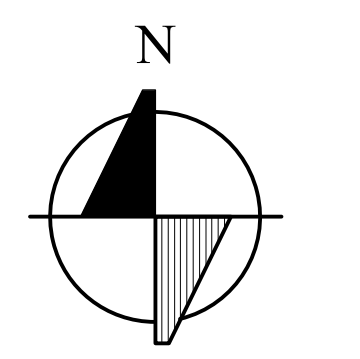
MAIN HOUSE	
LOWER	27.0'
MAIN	38.0'
MOTORCOURT	42.0'
UPPER	49.0'
T/PLATE	58.5'
GUESTHOUSE/ADU	
MOTORCOURT	42.0'
EXERCISE	56.5'

SITE ADDRESS: 3675 W MERCER WAY
MERCER ISLAND, WA
APPLICANT: DEMETRIOU ARCHITECTS
AGENT: ANDREA SMITH

SHEET INDEX
1 SHORELINE PERMIT SITE PLAN
2 SITE SECTION

APPROXIMATE EARTHWORK QUANTITIES

CUT	2,200± C.Y.
FILL	200± C.Y.
OUTSIDE OF BUILDING FOOTPRINTS	



SCALE: 1" = 20'

20300 Woodinville Snohomish Rd NE
Suite A • Woodinville, WA 98072
p: 425.415.2000 f: 425.486.5059
w: triadassociates.net

**SHORELINE PERMIT PLAN
SITE PLAN**
THE LADYBUG TRUST
OGDEN POINT RESIDENCE
CITY OF MERCER ISLAND, WASHINGTON

REVIEWED BY: [] DATE: []
BY: []

NO. 1 2 3 4 5 6 7 8 9 10 11 12 13 14 15 16 17 18 19 20 21 22 23 24 25 26 27 28 29 30 31 32 33 34 35 36 37 38 39 40 41 42 43 44 45 46 47 48 49 50 51 52 53 54 55 56 57 58 59 60 61 62 63 64 65 66 67 68 69 70 71 72 73 74 75 76 77 78 79 80 81 82 83 84 85 86 87 88 89 90 91 92 93 94 95 96 97 98 99 100

RICHARD A. TOMKINS, PE
PROJECT MANAGER
MARY McDOWELL, PLS
PROJECT SURVEYOR
ADAM STRICKER, PE
PROJECT ENGINEER

PROJECT LANDSCAPE ARCHITECT
FIRST SUBMITTAL DATE:
SCALE: HORIZ: 1"=20' VERT: N/A



STAMP NOT VALID
UNLESS SIGNED AND DATED

JOB NUMBER **LDYB0002**
SHEET NUMBER **1 OF 2**

P:\A\12\2017\11\24\SP\LDYB0002\SitePlan\EC-606-DYB0002-SitePlan.dwg, EC-606-DYB0002-SitePlan.dwg, EC-606-DYB0002-SitePlan.dwg, EC-606-DYB0002-SitePlan.dwg, EC-606-DYB0002-SitePlan.dwg
 P:\A\12\2017\11\24\SP\LDYB0002\SitePlan\EC-606-DYB0002-SitePlan.dwg, EC-606-DYB0002-SitePlan.dwg, EC-606-DYB0002-SitePlan.dwg, EC-606-DYB0002-SitePlan.dwg, EC-606-DYB0002-SitePlan.dwg